

# RC Boat Race Starting Clock



KP219ASM-RF9  
Wireless Keypad



Operate keypad on  
3AA batteries or  
9-15VDC power.



12-15VDC  
4 AMP  
Power  
Supply

## First time setup

[See manual for complete  
setup instructions](#)

Set Relay mode to single relay beep on timer zero. Setup “ **R07** ”  
Set Number of digits to 3. Setup “ **E3** ”

Enable beep on start and beep when the timer reaches zero. Setup “ **b05** ”

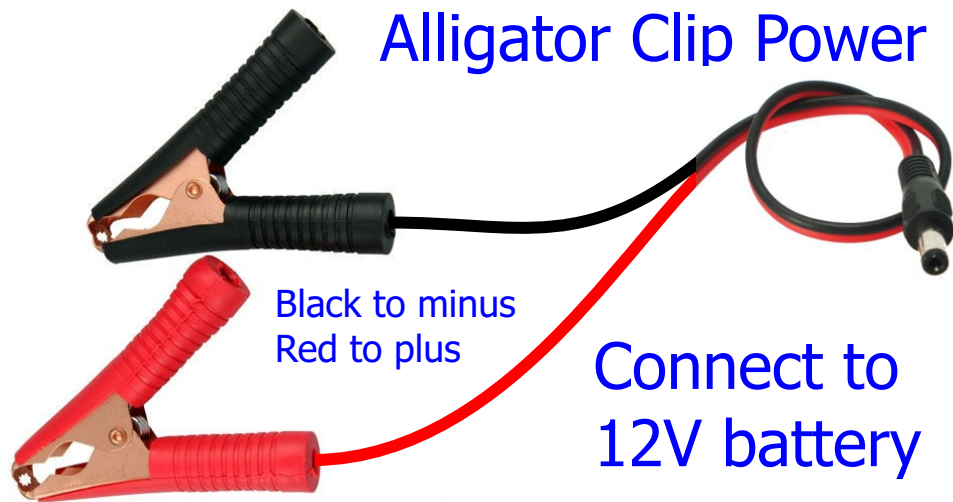
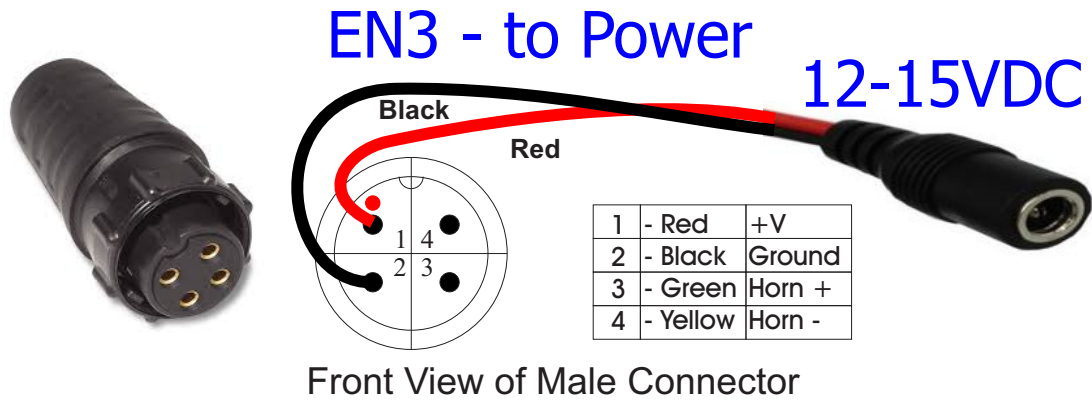
Setup the timer stop mode to display the heat number when the timer reaches zero.  
There are two options:

- 1) The timer changes to Heat number. Beep a single long beep at timer zero. Setup “ **F4** ”
- 2) The timer changes to Heat number. Beep each second for the last 10 seconds before the timer reaches zero and a single long beep at timer zero. Setup “ **F5** ”

Note: The “ **F4,F5,b05** ” settings are stored with the presets, so set these before storing the presets.

Set preset 1 to 2:30. To set turn the knob to set the value, then press and hold Preset 1.  
Set preset 2 to 1:00. To set turn the knob to set the value, then press and hold Preset 2.  
Set preset 3 to 0:30. To set turn the knob to set the value, then press and hold Preset 3.

# RC Boat Race Starting Clock



## Power using a wall adapter



# RC Boat Race Starting Clock

Horn,  
30 watt

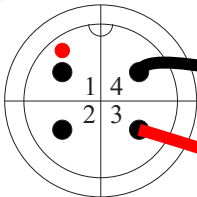


Horn	Function
1 - Red	1 - Siren
2 - Yellow	2 - Steady
3 - White	3 - Ground

Connect wires to Steady output and Ground



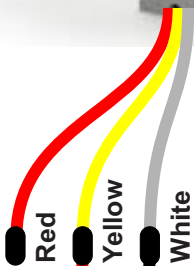
EN3 - to Horn



Front View of Male Connector

Black

Red



1	- Red	+V
2	- Black	Ground
3	- Green	Horn +
4	- Yellow	Horn -

# RC Boat Race Starting Clock

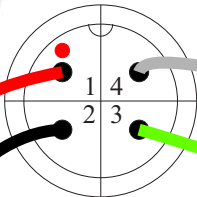
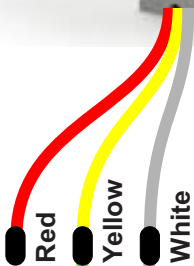
Horn,  
30 watt



Horn	Function
1 - Red	1 - Siren
2 - Yellow	2 - Steady
3 - White	3 - Ground

Connect wires to Steady output and Ground

EN3 - to Horn  
and Power

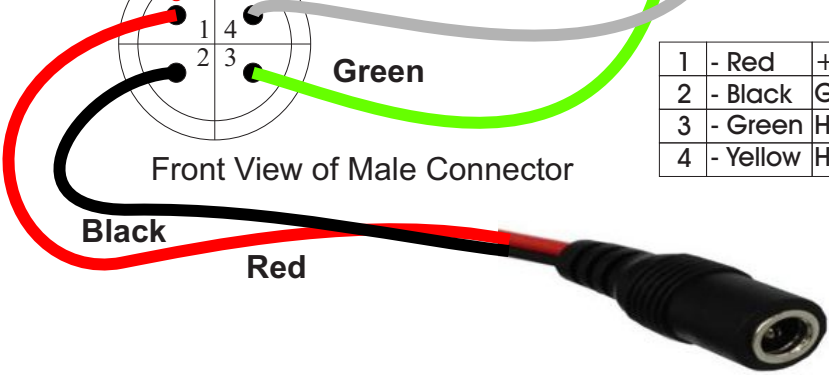


White

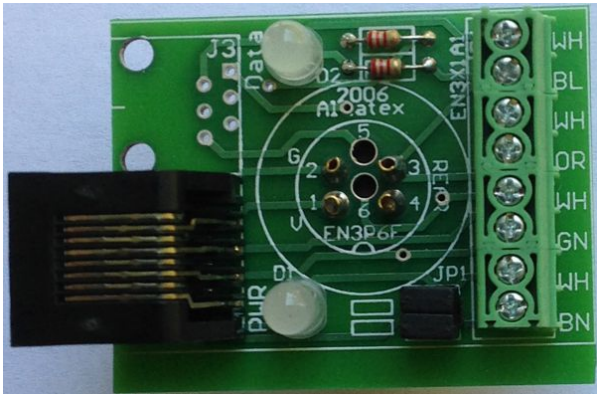
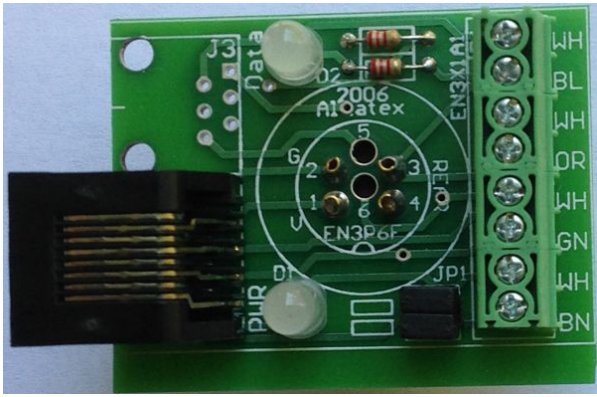
Green

Front View of Male Connector

1 - Red	+V
2 - Black	Ground
3 - Green	Horn +
4 - Yellow	Horn -



# RC Boat Race Starting Clock



1 - WH	1 - Horn Minus
2 - BL	2 - Horn Plus
3 - WH	3 - Ground
4 - OR	4 - Power +12V
5 - WH	5 - --
6 - GN	6 - --
7 - WH	7 - Ground
8 - BN	8 - Power +12V

EN3	Function
1 - Red	1 - Power +12V
2 - Black	2 - Ground
3 - Green	3 - Horn Plus
4 - White	4 - Horn Minus

## DSP1003RC Internal Wiring

